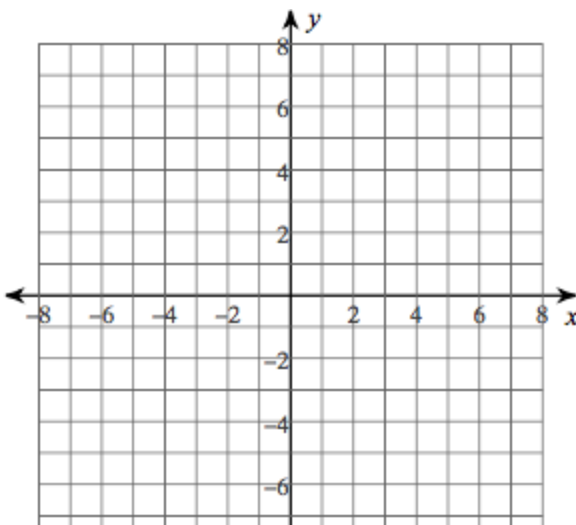


# Functions Day 2: Homework

## Piecewise Functions

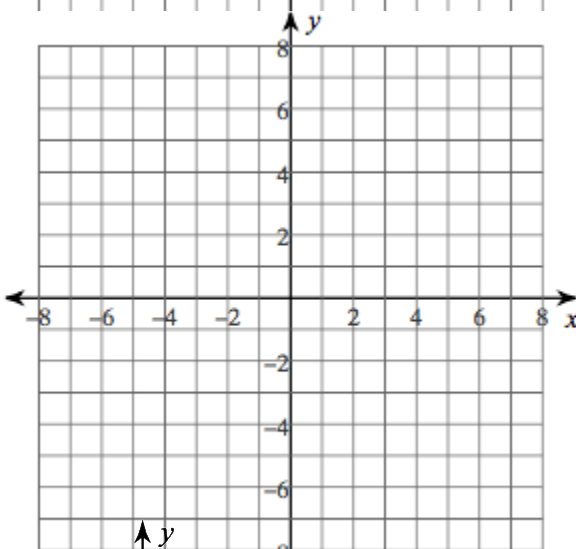
1. 
$$f(x) = \begin{cases} -\frac{1}{3}x, & x \geq 3 \\ x + 4, & x < 3 \end{cases}$$

- a. Domain:
- b. Range:
- c. Circle: Continuous/Discontinuous
- d.  $f(-2)$ :
- e.  $f(10)$ :



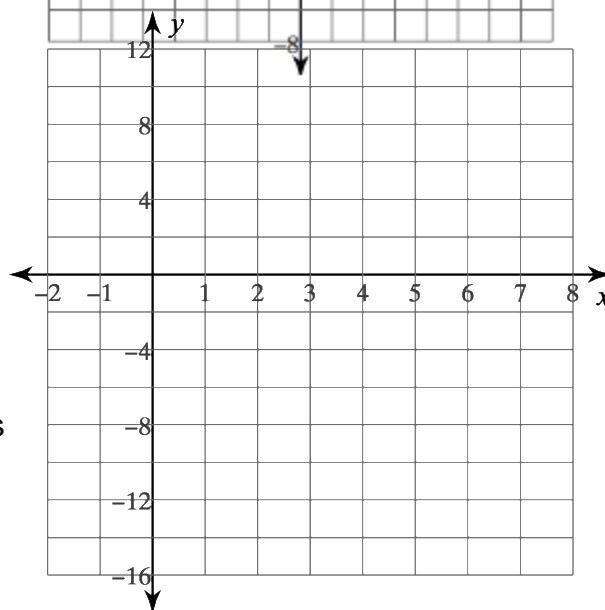
2. 
$$f(x) = \begin{cases} -2x + 1, & x \leq 2 \\ \frac{1}{2}x + 5, & x > 2 \end{cases}$$

- a. Domain:
- b. Range:
- c. Circle: Continuous/Discontinuous
- d.  $f(-2)$ :
- e.  $f(10)$ :



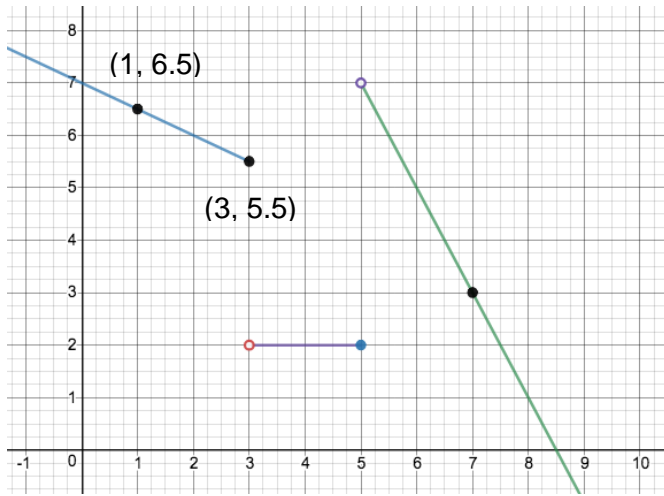
3. 
$$f(x) = \begin{cases} -2(x - 6)^2 + 7, & x \leq 6 \\ \frac{2}{3}x + 3, & x > 6 \end{cases}$$

- a. Domain:
- b. Range:
- c. Circle: Continuous / Discontinuous
- d.  $f(-2)$ :
- e.  $f(10)$ :



# Functions Day 2: Homework

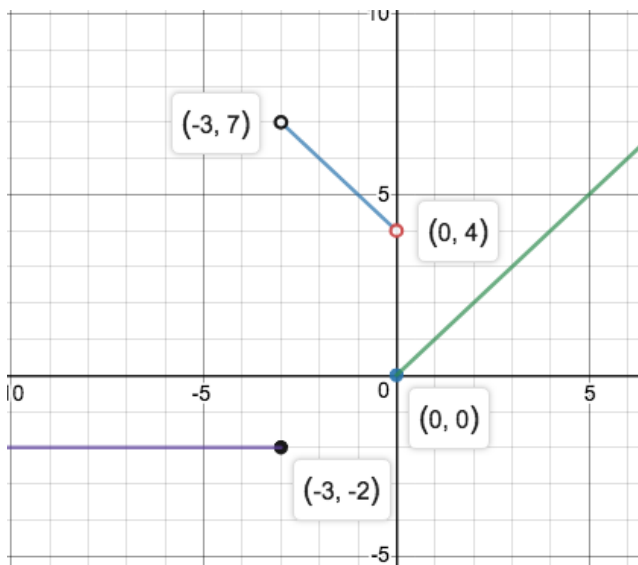
## Piecewise Functions



4a. Equation:

b. Domain:

c. Range:



5a. Equation:

b. Domain:

c. Range: