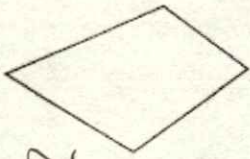
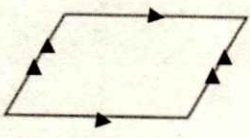
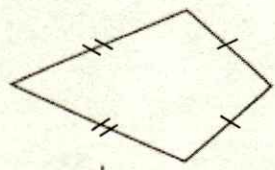
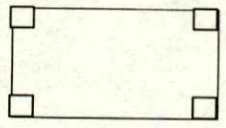
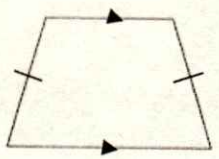
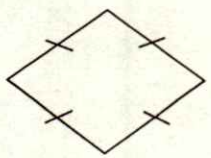
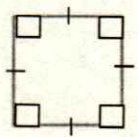
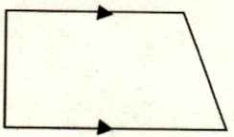
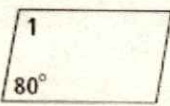
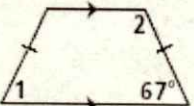
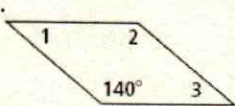
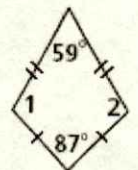
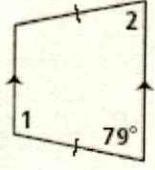
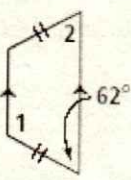
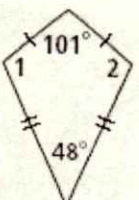
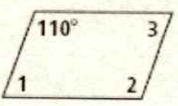
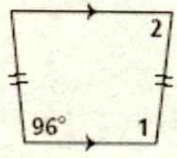
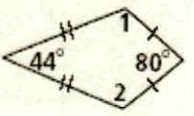


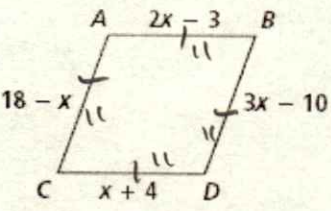
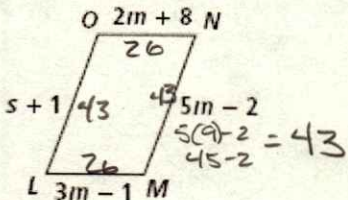
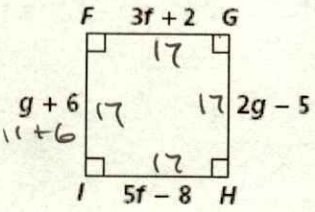
Classify each quadrilaterals based on their properties.

1.  Polygon
2.  Parallelogram
3.  Kite
4.  Rectangle
5.  Isosceles Trapezoid
6.  Rhombus
7.  Square
8.  Trapezoid

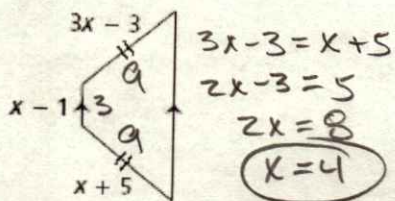
Find the measures of the numbered angles or variables for each quadrilateral.

9.  $L1: 100^\circ$
10.  $L1: 67^\circ$
 $L2: 113^\circ$
11.  $L1: 40^\circ$ $L2: 140^\circ$
 $L3: 40^\circ$
12.  $L1 = L2 = 107^\circ$
13.  $L1: 101^\circ$
 $L2: 79^\circ$
14.  $L1: 118^\circ$
 $L2: 62^\circ$
15.  $L1 = L2 = 105.5^\circ$
16.  $L1: 70^\circ$
 $L2: 110^\circ$
 $L3: 70^\circ$
17.  $L1 = 84^\circ$
 $L2 = 96^\circ$
18.  $L1 = L2 = 118^\circ$

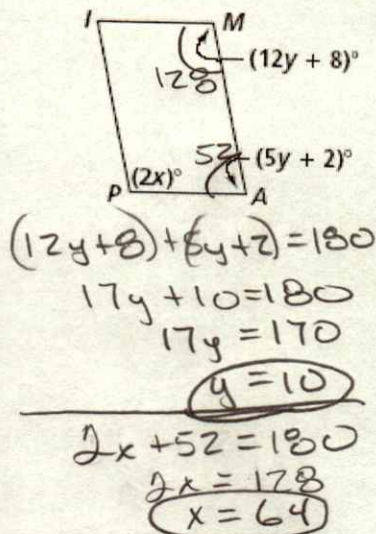
Find the values of the variables. Then find the lengths of the sides of each quadrilateral.

20. rhombus
- 
- $$2x - 3 = x + 4$$
- $$x - 3 = 4$$
- $$x = 7$$
- $$7 + 4 = 11$$
21. parallelogram
- 
- $$2m + 8 = 3m - 1$$
- $$8 = m - 1$$
- $$9 = m$$
- $$s + 1 = 43$$
- $$s = 42$$
22. square
- 
- $$g + 6 = 2g - 5$$
- $$6 = g - 5$$
- $$11 = g$$
- $$3f + 2 = 5f - 8$$
- $$2 = 2f - 10$$
- $$10 = 2f$$
- $$f = 5$$

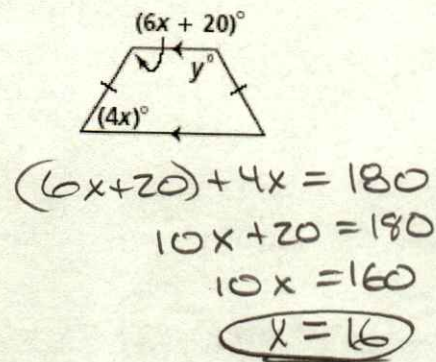
23. trapezoid



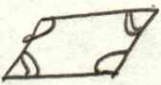
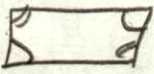
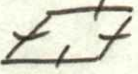
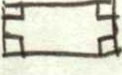


24. parallelogram



25. trapezoid



Complete each statement. None of the answers is square.

26. The _____ of a triangle is the height.
27. The mid-segment of a triangle is _____ to the base and it's length is _____ of the base.
28. The consecutive angles in a parallelogram are Supplementary (180°) 
29. The opposite angles in a parallelogram are Congruent (Equal) 
30. A quadrilateral with four congruent sides is a rhombus 
31. A quadrilateral with four congruent angles is a rectangle 
32. A kite has Congruent equal pair of opposite congruent angles. 
33. A trapezoid with congruent base angles is isosceles. 
34. A polygon with 11 sides is called a undecagon.
35. A polygon which is both equilateral and equiangular is regular.